

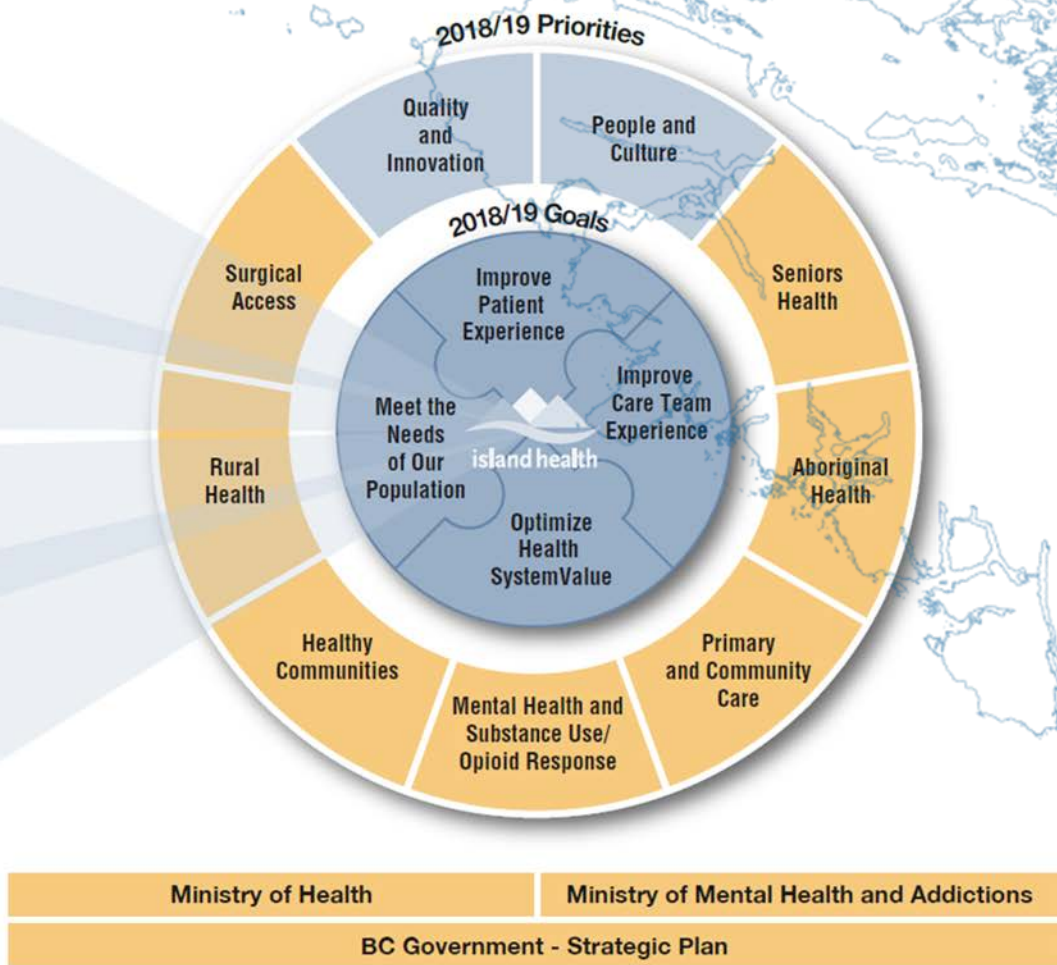
# Island Health Update

*Comox Strathcona Regional Hospital District*  
*February 7, 2019*

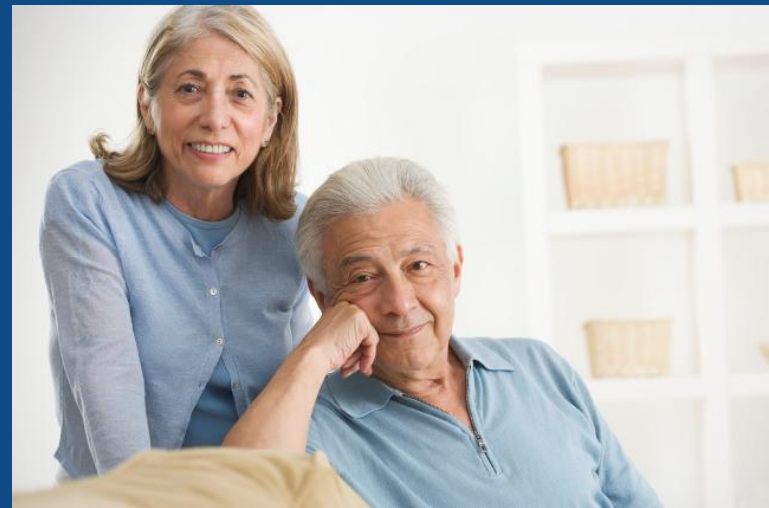
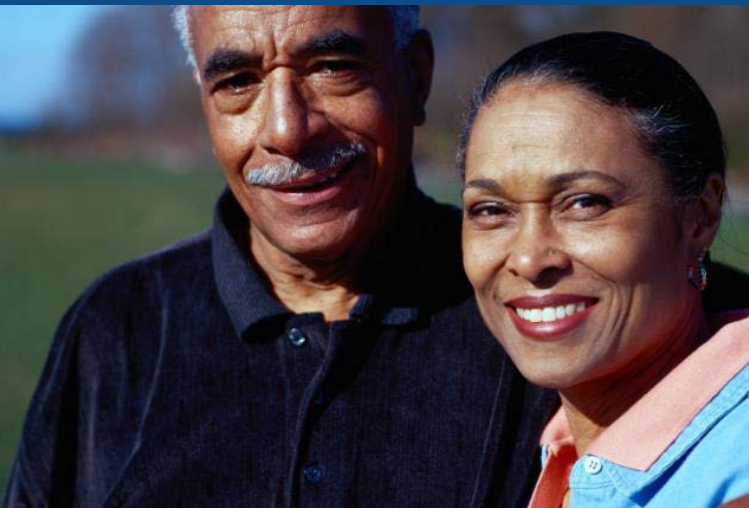


## Guiding Principles

- BETTER TOGETHER**  
Valuing each individual
- EXCELLENT CARE**  
Being with you all the way
- STRONG PARTNERSHIPS**  
Collaborating for health
- COURAGEOUS INNOVATION**  
Creating the best value



# Seniors



# Seniors Health

## *Programs:*

- *Adult Day Program*
  - ↑ 4250 CR
  - ↑ 2500 CV
- *Home Support Hours*
  - ↑ 6000 hours CR
  - ↑ 6000 hours CV
- *Home Care Visits*
  - ↑ 6 – 10 clients/evening
- *Long Term Care*
  - *Comox Valley*
  - *Campbell River*

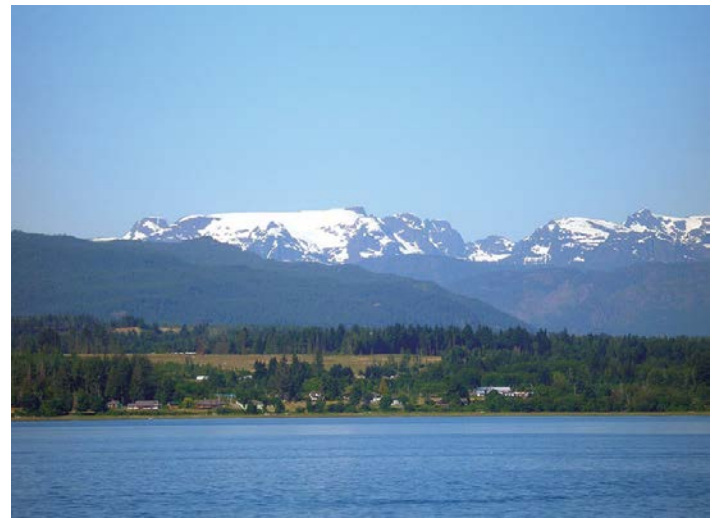


# Primary Care & Community Care



# Primary Care Network Comox Valley

- Integrated and coordinated health system for primary and community care
- Division of Family Practice, First Nations Health Authority and Island Health
- Working with the MoH for implementation
- Plan for Campbell River



# Acute Care





# Access

## NIH - CR

- 6,200 patient admissions
- 35,000 ED Visits
- 520 Births
- 4,500 Surgeries
- 4,500 MRIs
- 12,500 CTs

## NIH - CV

- 7,900 patient admissions
- 38,600 ED Visits
- 630 Births
- 8,400 Surgeries
- 5,500 MRIs
- 15,400 CTs



# Other Updates

